

Unified Threat Management

Quick Start Guide

Version 1.0



Unified Threat Management

Quick Start

Guide

Congratulations on your purchase of the Shield UTM appliance to protect your networks and hosts. This Quick Start Guide describes the steps involved in setting up the Shield UTM Appliance.

Version 1.0

1 PACKAGE CONTENTS

- Take the UTM device and all accessories out of the box
- Check that you have all the items listed below.



1 UTM Appliance



1 Power Adapter



2 Power Chords

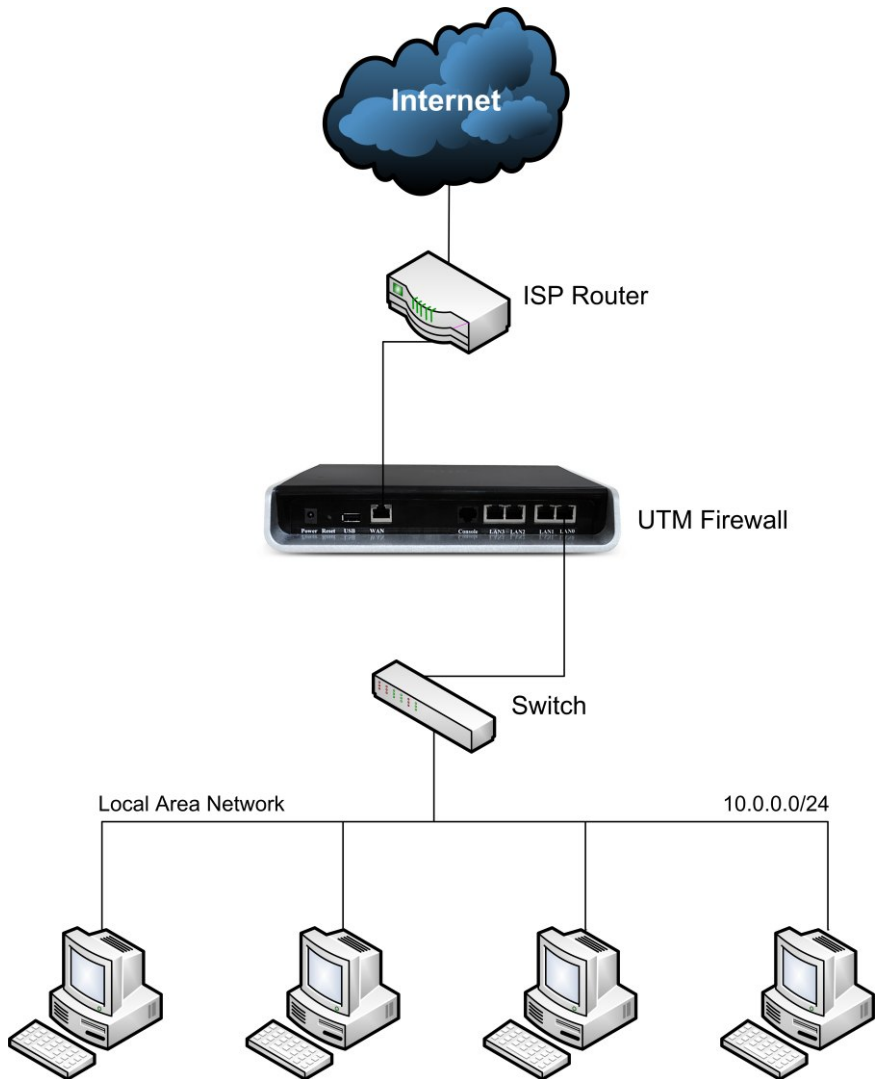


1 Console Cable



2 Ethernet Cable

2 NETWORK DEPLOYMENT



3 CONNECTING THE HARDWARE



4 DEFAULT CONFIGURATION

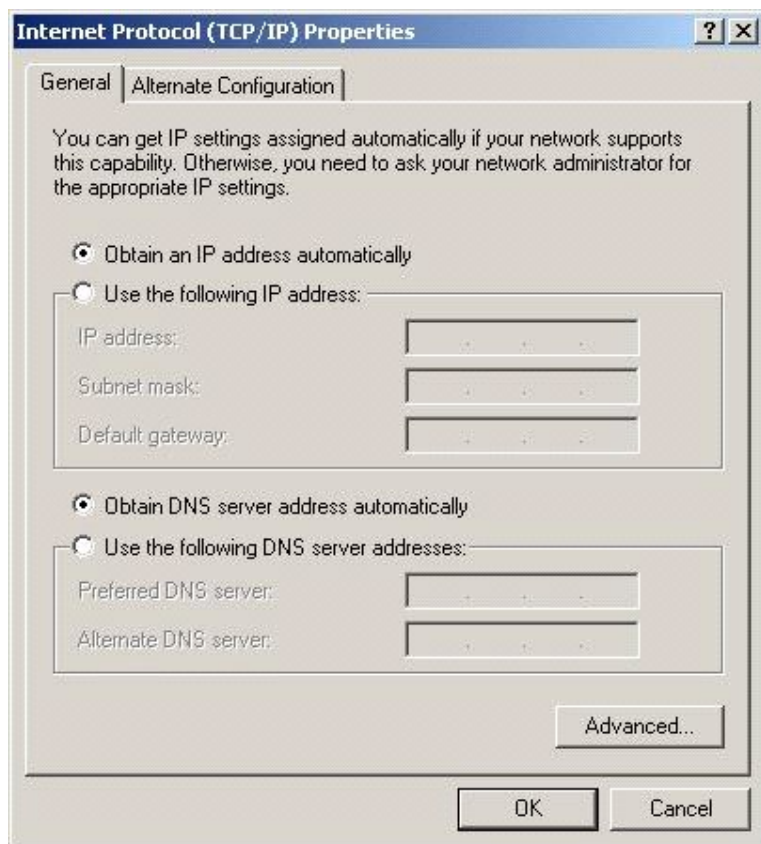
Ethernet Port	IP Address
LAN 0-3 > eth1	10.0.0.1/255.255.255.0
WAN > eth0	10.1.0.1/255.255.255.0
Management VLAN (Accessible via LAN Ports)	192.168.1.1/255.255.255.0
Default Firewall Mode	Router

Management Service	Default Credentials
Web UI	admin/admin
SSH CLI	admin/admin123

5

NETWORK CONFIGURATION ON CLIENT SIDE

- UTM Firewall will have default Network Configuration it is necessary to configure your Personal Computer accordingly
- Launch the network adapter configuration dialog of your Windows operating system and modify the TCP/IP configuration to Obtain an IP Address automatically



6 CONNECT UTM FIREWALL

- Connect the appliance to the power socket using the power cable.
- Connect the a PC to one of the LAN ports of the Appliance.
- Your PC will get an IP address from 10.0.0.0/24 subnet.
- You can access the Configuration management WebUI from the browser on the PC with the URL <http://10.0.0.1/> or <http://192.168.1.1>
- The recommended browsers for accessing UTM 1.0 WebUI is Mozilla Firefox / Internet Explorer 8 and above.
- Accept the Self signed SSL Certificate and Login to the UTM appliance using default Web UI credentials.



- WebUI is running on secure http server. Accessing <http://10.0.0.1> or <http://192.168.1.1> will redirect to <https://10.0.0.1/> or <https://192.168.1.1/>

7 CONNECT INTERNET SERVICE PROVIDER

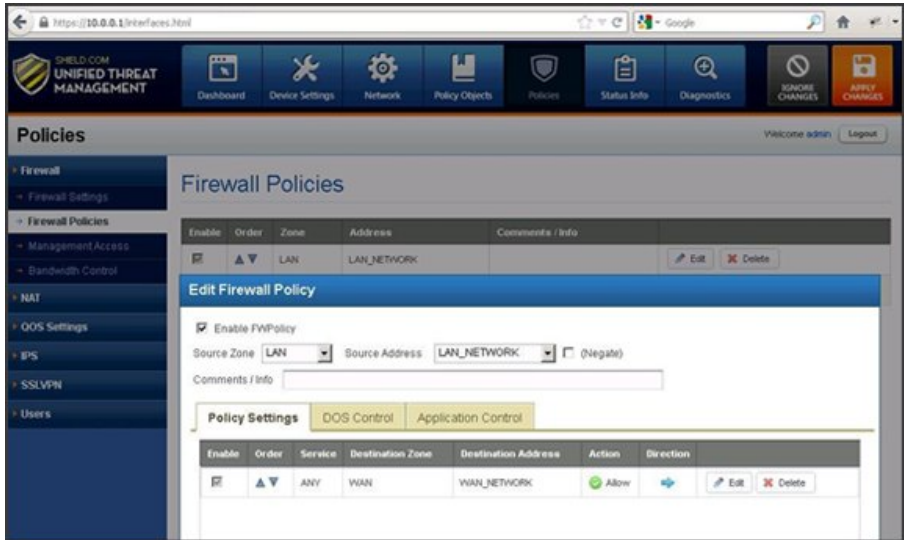
- The WAN interface(eth0) is configured with static IP address by default in UTM1.0 Appliance
- If your ISP provides Static IP address for the WAN need to configure Static IP for eth0 port.
- If your ISP assigns the WAN IP address through the DHCP protocol, need to configure eth0 to DHCP Config mode.
- Enable the available WAN connection types and configure it according to the settings provided by your Internet Service Provider.
- Navigate to: **Network > Interfaces > eth0 > Edit > Config Mode > Static/DHCP.**



- To Apply the current changes navigate to : **Apply Changes > Configuration Setting > Yes >** (You can view results of applied configuration in same dialog Box). You can close dialog by clicking the '**Close**' button.
- Tto check if the WAN IP address assignment was successful, navigate to: **Status Info > Interfaces > eth0 > UP.**

8 FIREWALL POLICIES

- The **default policy configuration** of the UTM Firewall allow all connections from **LAN to WAN**.
- To check /Modify Navigate to: **Policies > Firewall Policies > LAN > Edit > Policy Setting >** (You can see here Destination Zone 'WAN' Action 'Allow' Direction 'OUTBOUND')



The screenshot displays the UTM Firewall Policies configuration page. The main heading is "Firewall Policies". Below it, there is a table listing existing policies. One policy is selected for editing, showing the "Edit Firewall Policy" form. The "Enable FWP Policy" checkbox is checked. The "Source Zone" is set to "LAN" and the "Source Address" is "LAN_NETWORK". Below the form, the "Policy Settings" section is visible, showing a table with columns for Enable, Order, Service, Destination Zone, Destination Address, Action, and Direction. The table contains one entry: Enable (checked), Order (1), Service (ANY), Destination Zone (WAN), Destination Address (WAN_NETWORK), Action (Allow), and Direction (OUTBOUND).

Enable	Order	Zone	Address	Comments / Info
<input checked="" type="checkbox"/>	1	LAN	LAN_NETWORK	

Enable	Order	Service	Destination Zone	Destination Address	Action	Direction
<input checked="" type="checkbox"/>	1	ANY	WAN	WAN_NETWORK	Allow	OUTBOUND

For sales please contact

Canada

Toll Free: +1 877 339 2556

Direct: +1 778 892 2877

Email: andre@allo.com

Skype: [alloyoiphardware](#)

For more information please contact

Engineering Facility

Adarsh Eco Place
#176, Ground Floor,
EPIP Industrial Area, Kundalahalli
KR Puram Hobali, Whitefield
Bangalore - 66, India

Phone: +91 80 67080808

Fax: +91 80 67080810

Website: WWW.ALLO.COM WWW.SHIELD.COM

Manufacturing Plant

143 - A1, Bommasandra Industrial Area
Anekal Taluk, Hosur Road
Bangalore - 99, India